

SPIRAL[®] LH

H I G H P E R F O R M A N C E L O W H E A D R O O M D O O R

High Security, High Speed, Designed for Applications with Low Headroom.

With an opening speed of up to 60 inches per second, the Spiral Low Headroom (LH) door offers the speed you need for high-traffic situations while meeting the low headroom requirements of parking garages and other commercial structures. Rigid, aluminum slat construction eliminates any need for a second overnight security door and the rubber weatherseal provides a tight seal.

Crisp lines give the Spiral LH door a stylish look that's great for all kinds of parking and other commercial, institutional and residential applications. Because its anodized aluminum slats will not corrode, you can count on that look to last for many years even under the worst weather conditions.



High-Security - Rigid, aluminum slat construction and optional, integral locking system provides unparalleled security.

Low Headroom - The low lintel design requires only 11 inches of headroom clearance.

Whisper Quiet - The unique Spiral roll-up design features no metal-to-metal contact, therefore offering whisper-quiet operation.

High Performance - The variable speed AC Drive system with soft acceleration and braking smooths out routine stops and starts, virtually eliminating the clunking gear engagements associated with typical overhead door operation.

Energy Efficient and Tight Seal - Aluminum slats, along with a durable rubber membrane which covers their aluminum connecting hinges, provide a 100% seal against dust pollution, drafts, and inclement weather. Optional insulation simply adds to the energy savings.



Driving The Door Industry.SM

SPIRAL[®] LH

HIGH PERFORMANCE LOW HEADROOM DOOR

Specifications: Subject to change

Model: Rytec[®] Spiral[®] LH Door

Standard Size: Up to 19 feet 8 inches wide by 16 feet 4 inches high.

Door Panel: Double-walled aluminum slats are 6 inches high by 3/4 or 1-3/16 inches thick. Integral rubber weatherseal between each panel. Optional insulation and clear polycarbonate windows.

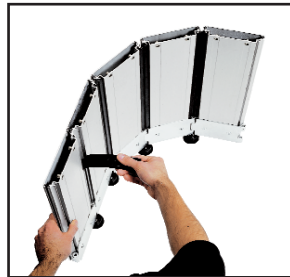
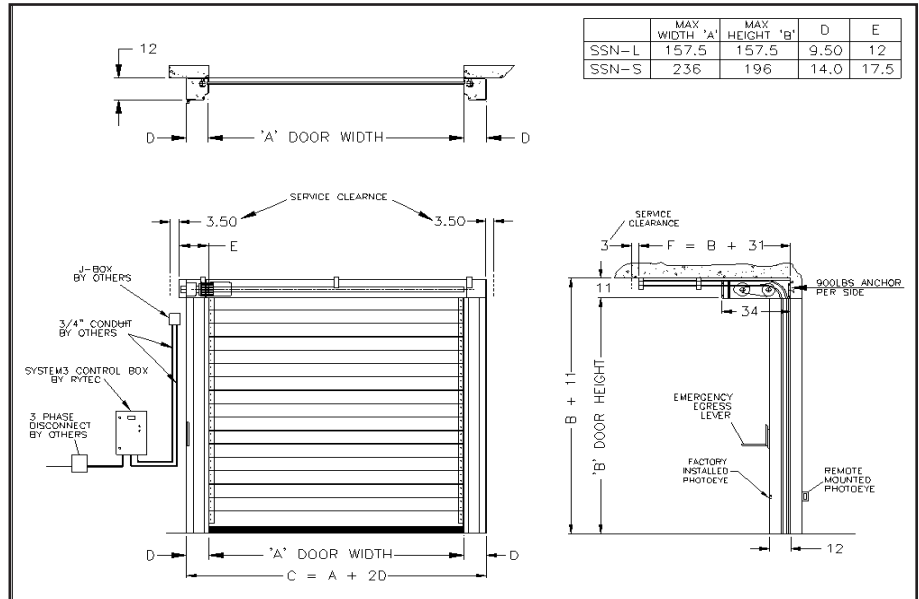
Side Frames: Galvanized steel side frames with full-height weatherseal on both sides to seal against door panel. Dual electric photo eyes are standard. Optional stainless steel package available.

Counterbalance: Up to six extension springs in each side column, depending on the size of the door. The springs assist the motor in opening the door. Mechanical egress lever on side column allows door to be opened in the event of a power failure.

Bottom Bar: Extruded aluminum bottom bar with reliable, electric reversing edge.

Drive System: Three-phase, variable speed AC Drive provides soft acceleration and deceleration. Independent opening and closing speeds provide flexibility to accommodate any application.

Electrical Controls: System 3[®] controller housed in a NEMA 4 rated enclosure with factory set parameters. Self-diagnostic features and a two-line, 32-character LCD display in English, Spanish or French provide quick and straightforward installation and control adjustments. Programmable inputs and outputs accommodate special control applications without the need for additional electrical components.



Rubber Weatherseal
Integral rubber weatherseal between anodized aluminum slats is replaceable for easy maintenance.



Compact Motor
Compact, variable speed motor with soft acceleration and braking for smooth starts and stops. Shown with optional motor cover.



System 3 Controller
Makes programming and troubleshooting easier, more flexible and more precise than ever.

Travel Speed: Opens at up to 60 inches per second.

Warranty: One-year limited warranty on materials and workmanship.



One Cedar Parkway
Jackson, WI 53037-0403
Phone: 262-677-9046
Fax: 262-677-2058
Toll Free: 888-GO-RYTEC
Email: info@rytecdoors.com
Web: www.rytecdoors.com